



Rubber Regenerating & Processing Co.

QUICK DELIVERY, HIGH PERFORMANCE COST EFFECTIVE SOLUTION

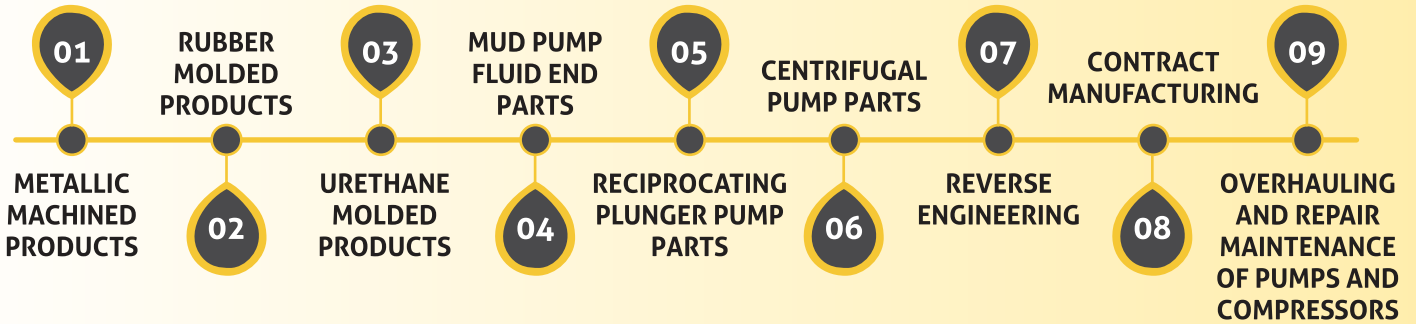
LEADERS IN EQUIPMENT, ACCESSORIES
AND ELASTOMERIC SPARES FOR
OIL FIELD & PETROCHEMICAL INDUSTRIES



C A T A L O G U E 2 0 2 5

www.rrpcindia.com

DELIVERING *Excellence* SINCE 1963



WORLDWIDE EXPORTS SINCE 2000



CONTENTS

- Reciprocating Plunger Pumps Overview 04 - 05

PUMP MODEL

- TRIPLEX PLUNGER PUMP (RRP 23 T) 06 - 07
- TRIPLEX PLUNGER PUMP (RRP 23 TW) 08 - 09
- TRIPLEX PLUNGER PUMP (RRP 24 T) 10 - 11
- TRIPLEX PLUNGER PUMP (RRP 34 T) 12 - 13
- TRIPLEX PLUNGER PUMP (RRP 44 T) 14 - 15
- TRIPLEX PLUNGER PUMP (RRP 16 T) 16 - 17
- TRIPLEX PLUNGER PUMP (RRP 36 T) 18 - 19
- TRIPLEX PLUNGER PUMP (RRP 46 T) 20 - 21
- TRIPLEX PLUNGER PUMP (RRP 56 TW) 22 - 23
- QUINTUPLEX PLUNGER PUMP (RRP 36 Q) 24 - 25
- TRIPLEX PLUNGER PUMP (RRP 38 TG) 26 - 27
- TRIPLEX PLUNGER PUMP (RRP 48 TG) 28 - 29
- TRIPLEX PLUNGER PUMP (RRP 68 TGW) 30 - 31



POSITIVE DISPLACEMENT RECIPROCATING PLUNGER PUMPS

Overview

Discover the power and efficiency of RRP-branded reciprocating plunger pumps. Engineered for robust performance in high-pressure applications, our pumps are available in a diverse range of sizes, featuring both triplex and quintuplex configurations. We adhere to the latest API 674, ISO 13710, and ANSI/HI standards, ensuring our pumps deliver top-quality and reliable performance for various liquids.

Versatile Applications

RRP reciprocating plunger pumps are ideal for a wide array of sectors, including:

- Oil and Gas
- Petrochemical
- Wastewater/Effluent Treatment

They excel in handling liquids such as crude oil, methanol injection, glycol circulation, water injection, and high-pressure descaling in steel plants.

Exceptional Characteristics and Design Features

Our reciprocating plunger pumps boast exceptional characteristics and design features to ensure optimal performance and reliability. **Highlights include:**

- Available in a variety of sizes in both triplex and quintuplex models
- Large power end access covers and doors for ease of maintenance
- Robust design for low noise and vibration levels
- High-duty efficiency for enhanced performance
- Design life of 20 years for long-term reliability
- Durable Construction Materials



Quality Materials

We prioritize the use of high-quality construction materials for our reciprocating plunger pumps. The crankcase is made of ductile iron with a customer-specific paint finish, ensuring durability and corrosion resistance. The wetted parts can be manufactured from a wide range of alloys, including those compliant with NACE standards. Our materials undergo stringent quality checks, and non-destructive testing can be tailored to meet project requirements.

Customization Package Options

We offer various package options to provide customization and flexibility. These options include mounting dampeners, PSVs, and instrumentation directly to the pump and pump suction / discharge. Our pumps can be configured for ATEX compliance, package condition monitoring, and different plunger packings and power end lubrication options. We offer a wide range of drive options, including electric motors, diesel / petrol / Gas engines, variable frequency drives, and transmission options such as gearbox.

Quality Assurance and Customer Commitment

Our commitment to quality is reflected in our rigorous certification processes and extensive testing facilities. We prioritize innovation, continuous improvement, and customer satisfaction, establishing ourselves as leaders in advanced pump solutions. Trusted by national oil companies worldwide, our products deliver exceptional reliability and performance.

Choose RRP

When you select RRP reciprocating plunger pumps, you invest in reliability, performance, and durability. Our products meet the highest industry standards to satisfy the demanding requirements of your applications.

Contact us today to learn how RRP reciprocating plunger pumps can enhance your operations. Our expert team is ready to assist you in finding the perfect pump solution for your needs.



PUMP MODEL

TRIPLEX PLUNGER PUMP RRP 23 T



This three-inch stroke pump is equipped with mono block Forged Steel fluid end, designed to handle various fluid.

Working Pressure

Upto 2,290 psig

Displacement

3280 bpd (95.67 gpm)

at 970 psig

1386 bpd (40.43 gpm)

At 2290 psig

SPECIFICATIONS

	ENGLISH	METRIC	MAINTENANCE FEATURES
Pump size (max .Plunger Dia x Stroke)	Inches 2½ X 3	mm 64 x 76	<ul style="list-style-type: none"> • Horizontal design • Large power end access covers and doors • Outside access for bearing adjustment • Separate crosshead–plunger shank construction • Open frame cradles • Removable stuffing boxes
Standard Plunger Sizes	Inches 1-5/8, 1-3/4, 1-7/8, 2, 2-1/8, 2-1/4, 2-3/8 and 2-1/2	mm 41, 44, 48, 51, 54, 57, 60 & 64	
Rated bhp at 500 rpm	hp 60	Kw 45	
Hydrostatic Test Pressure: Discharge	psi 3435	kPa 23683	
Suction	psi 412.5	kPa 2844	
Maximum Working Pressure: Discharge	psi 2290	kPa 15789	
Suction	psi 275	kPa 1896	
Two Threaded Suction Connection: (Pipe Tap)	Inches 3"	mm 76	
Two Discharge Connection: Pipe Tap	Inches 2"	mm 51	
Crank Shaft Extension: Diameter	Inches 2.995	mm 76	
Length	Inches 4 ¾	mm 121	
Keyway (Width x Depth)	Inches ¾ x 3/8	mm 19 x 10	
Accessory Gear Units Reduction Ratios	3.54:1	3.54:1	
	3.95:1	3.95:1	
	4.45:1	4.45:1	
Rated Plunger Rod Load	Pounds 4750	N 21129	
Oil Capacity (Crank Case)	Gallons 2½	Litres 9	
Gear Unit (Horizontally Mounted)	Gallons 1½	Litres 6	
Weight (On wooden shipping skid)(Est.)	Pounds 860	Kg 390	
Gear Unit (weight Varies with Gear Ratio) (Est.)	Pounds 175	Kg 79	

PLUNGER DIA (INCH)	PLUNGER DIA (mm)	STUFFING BOX BORE (INCH)	STUFFING BOX BORE (mm)
1 5/8	41	2 1/4	57
1 3/4 - 2 1/2	44 - 64	3	76

PUMP PERFORMANCE DATA

ENGLISH UNIT

Plgr.Dia (inch)	Plunger Area (Sq.inch)	Displacement (Gal.Per Rev.)	Maximum Pressure (psi)	100 rpm		200 rpm		300 rpm		400 rpm		500 rpm	
				bpd	gpm	bpd	gpm	bpd	gpm	bpd	gpm	bpd	gpm
1¼	2.0739	0.0808	2290	277	8.08	554	16.16	831	24.24	1109	32.35	1386	40.43
1½	2.4053	0.0937	1980	321	9.36	643	18.75	964	28.12	1286	37.51	1607	46.87
1¾	2.7612	0.1076	1720	369	10.76	738	21.53	1107	32.29	1476	43.05	1845	53.81
2	3.1416	0.1224	1510	420	12.25	840	24.50	1259	36.72	1679	48.97	2099	61.22
2¼	3.5466	0.1382	1340	474	13.83	948	27.45	1422	41.48	1896	55.30	2370	69.13
2½	3.9761	0.1549	1200	531	15.49	1063	31.00	1594	46.49	2125	61.98	2657	77.50
2¾	4.4301	0.1726	1070	592	17.27	1184	34.53	1776	51.80	2368	69.07	2960	86.33
3	4.9087	0.1912	970	656	19.13	1312	38.27	1968	57.40	2624	76.53	3280	95.67
Brake Horse Power Required				12		24		36		48		60	

METRIC UNIT

Plgr.Dia (mm)	Plunger Area (cm ²)	Displacement (L / Rev.)	Maximum Pressure (kPa)	100 rpm		200 rpm		300 rpm		400 rpm		500 rpm	
				m ³ /d	L/s	m ³ /d	L/s	m ³ /d	L/s	m ³ /d	L/s	m ³ /d	L/s
41	13.3802	0.3059	15789	44	0.51	88	1.02	132	1.53	176	2.04	220	2.55
44	15.5179	0.3547	13651	51	0.59	102	1.18	153	1.77	204	2.36	255	2.95
48	17.8139	0.4072	11859	59	0.68	117	1.35	176	2.04	235	2.72	293	3.39
51	20.2683	0.4633	10411	67	0.78	133	1.54	200	2.31	267	3.09	334	3.87
54	22.881	0.5231	9239	75	0.87	151	1.75	226	2.62	301	3.48	377	4.36
57	25.6521	0.5864	8274	84	0.97	169	1.96	253	2.93	338	3.91	422	4.88
60	28.5815	0.6534	7377	94	1.09	188	2.18	282	3.26	376	4.35	470	5.44
64	31.6692	0.7240	6688	104	1.20	208	2.41	313	3.62	417	4.83	521	6.03
Kilo-watt Input				9		18		27		36		45	

ENGLISH AND METRIC

Gear Unit Pinion Shaft r / min at Gear Ratios of:	3.54:1	354	708	1062	1416	1770
	3.95:1	395	790	1185	1580	1975
	4.45:1	445	890	1335	1780	2225

PUMP MODEL

TRIPLEX PLUNGER PUMP RRP 23 TW



This three-inch stroke pump is equipped with mono block Forged Steel fluid end, designed to handle various fluid.

Working Pressure

Upto 2,290 psig

Displacement

3280 bpd (95.62 GPM)

at 970 psig

664 bpd (19.36 gpm)

at 2290 psig

SPECIFICATIONS

	ENGLISH		METRIC		MAINTENANCE FEATURES
Pump size (max .Plunger Dia x Stroke)	Inches	2½ X 3	mm	64 x 76	
Standard Plunger Sizes	Inches	1-1/8, 1-1/4, 1-3/8, 1-1/2, 1-5/8, 1-3/4, 1-7/8, 2, 2-1/8, 2-1/4, 2-3/8 and 2-1/2	mm	29, 32, 35, 38, 41, 44, 48, 51, 54, 57, 60 and 64	
Rated bhp at 500 rpm	hp	60	Kw	45	
Hydrostatic Test Pressure: Discharge	psi	3435	kPa	23683	
Suction	psi	637.5	kPa	4395	
Maximum Working Pressure: Discharge	psi	2290	kPa	15789	
Suction	psi	425	kPa	2930	
Two Threaded Suction Connection: (Pipe Tap)	Inches	2½	mm	64	
Two Discharge Connection: Pipe Tap	Inches	2"	mm	51	
Crank Shaft Extension: Diameter	Inches	2.995	mm	76	
Length	Inches	4 ¾	mm	121	
Keyway (Width x Depth)	Inches	3/4 x 3/8	mm	19 x 10	
Accessory Gear Units Reduction Ratios		3.54:1		3.54:1	
		3.95:1		3.95:1	
		4.45:1		4.45:1	
Rated Plunger Rod Load	Pounds	4750	N	21129	
Oil Capacity (Crank Case)	Gallons	2½	Litres	9	
Gear Unit (Horizontally Mounted)	Gallons	1½	Litres	6	
Weight (On wooden shipping skid) (Est.)	Pounds	860	Kg	390	
Gear Unit (Weight Varies with Gear Ratio) (Est.)	Pounds	175	Kg	79	

PLUNGER DIA (INCH)	PLUNGER DIA (mm)	STUFFING BOX BORE (INCH)	STUFFING BOX BORE (mm)
1½ - 1⅝	29 - 41	2¼	57
1¾ - 2½	44 - 64	3	76

PUMP PERFORMANCE DATA

ENGLISH UNIT

Plgr.Dia (inch)	Plunger Area (Sq.inch)	Displacement (Gal.PerRev.)	Maximum Pressure (psi)	100 rpm		150 rpm		200 rpm		250 rpm		300 rpm		350 rpm		400 rpm		450 rpm		500 rpm	
				bpd	gpm	bpd	gpm	bpd	gpm	bpd	gpm	bpd	gpm	bpd	gpm	bpd	gpm	bpd	gpm	bpd	gpm
1½	0.9940	0.0387	2290	133	3.88	199	5.80	266	7.76	332	9.68	399	11.64	465	13.56	531	15.49	598	17.44	664	19.37
1¾	1.2272	0.0478	2290	164	4.78	246	7.18	328	9.57	410	11.96	492	14.35	574	16.74	656	19.13	738	21.53	820	23.92
1⅝	1.4849	0.0579	2290	198	5.78	298	8.69	397	11.58	496	14.47	595	17.35	695	20.27	794	23.16	893	26.05	992	28.93
1½	1.7671	0.0688	2290	236	6.88	354	10.33	472	13.77	590	17.21	708	20.65	827	24.12	945	27.56	1063	31.00	1181	34.45
1¾	2.0739	0.0808	2290	277	8.08	416	12.13	554	16.16	693	20.21	831	24.24	970	28.29	1109	32.35	1247	36.37	1386	40.43
1⅝	2.4053	0.0937	1980	321	9.36	482	14.06	643	18.75	804	23.45	964	28.12	1125	32.81	1286	37.51	1446	42.18	1607	46.87
1¾	2.7612	0.1076	1720	369	10.76	553	16.13	738	21.53	922	26.89	1107	32.29	1291	37.65	1476	43.05	1660	48.42	1845	53.81
2	3.1416	0.1224	1510	420	12.25	630	18.38	840	24.50	1050	30.63	1259	36.72	1469	42.85	1679	48.97	1889	55.10	2099	61.22
2¼	3.5466	0.1382	1340	474	13.83	711	20.74	948	27.65	1185	34.56	1422	41.48	1659	48.39	1896	55.30	2133	62.21	2370	69.13
2½	3.9761	0.1549	1200	531	15.49	797	23.25	1063	31.00	1328	38.73	1594	46.49	1860	54.25	2125	61.98	2391	69.71	2657	77.46
2¾	4.4301	0.1726	1070	592	17.27	888	25.90	1184	34.53	1480	43.17	1776	51.80	2072	60.43	2368	69.07	2664	77.67	2960	86.30
3	4.9087	0.1912	970	656	19.13	984	28.70	1312	38.27	1640	47.83	1968	57.40	2296	66.97	2624	76.53	2952	86.06	3280	95.62
Brake Horse Power Required				12		18		24		30		36		42		48		54		60	

METRIC UNIT

Plgr.Dia (mm)	Plunger Area (cm ²)	Displacement (L / Rev.)	Maximum Pressure (kPa)	100 rpm		150 rpm		200 rpm		250 rpm		300 rpm		350 rpm		400 rpm		450 rpm		500 rpm	
				m ³ /d	L/s	m ³ /d	L/s	m ³ /d	L/s	m ³ /d	L/s	m ³ /d	L/s	m ³ /d	L/s	m ³ /d	L/s	m ³ /d	L/s	m ³ /d	L/s
29	6.413	0.1466	15789	21	0.24	32	0.37	42	0.49	53	0.61	63	0.73	74	0.86	84	0.97	95	1.10	106	1.23
32	7.9173	0.1810	15789	26	0.30	39	0.45	52	0.60	65	0.75	78	0.90	91	1.05	104	1.20	117	1.35	130	1.50
35	9.5799	0.2190	15789	32	0.37	47	0.54	63	0.73	79	0.91	95	1.10	110	1.27	126	1.46	142	1.64	158	1.83
38	11.4009	0.2606	15789	38	0.44	56	0.65	75	0.87	94	1.09	113	1.31	131	1.52	150	1.74	169	1.96	188	2.18
41	13.3802	0.3059	15789	44	0.51	66	0.76	88	1.02	110	1.27	132	1.53	154	1.78	176	2.04	198	2.29	220	2.55
44	15.5179	0.3547	13652	51	0.59	77	0.89	102	1.18	128	1.48	153	1.77	179	2.07	204	2.36	230	2.66	255	2.95
48	17.8139	0.4072	11859	59	0.68	88	1.02	117	1.35	147	1.70	176	2.04	205	2.37	235	2.72	264	3.06	293	3.39
51	20.2683	0.4633	10411	67	0.78	100	1.16	133	1.54	167	1.93	200	2.31	234	2.71	267	3.09	300	3.47	334	3.87
54	22.881	0.5231	9238	75	0.87	113	1.31	151	1.75	188	2.18	226	2.62	264	3.06	301	3.48	339	3.92	377	4.36
57	25.6521	0.5864	8274	84	0.97	127	1.47	169	1.96	211	2.44	253	2.93	296	3.43	338	3.91	380	4.40	422	4.88
60	28.5815	0.6534	7377	94	1.09	141	1.63	188	2.18	235	2.72	282	3.26	329	3.81	376	4.35	423	4.90	470	5.44
64	31.6692	0.7240	6688	104	1.20	156	1.81	208	2.41	261	3.02	313	3.62	365	4.22	417	4.83	469	5.43	521	6.03
Kilo-watt Input				9		13		18		22		27		31		36		40		45	

ENGLISH AND METRIC

Gear Unit Pinion Shaft r / min at Gear Ratios of:	3.54:1	354	531	708	885	1062	1239	1416	1593	1770
	3.95:1	395	593	790	988	1185	1383	1580	1778	1975
	4.45:1	445	668	890	1113	1335	1558	1780	2003	2225

PUMP MODEL

TRIPLEX PLUNGER PUMP RRP 24 T



This four-inch stroke pump is equipped with mono block Forged Steel fluid end, designed to handle various fluid.

Working Pressure

Upto 5,000 psig

Displacement

3187 bpd (92.95 gpm)

at 1660 psig

984 bpd (28.70 gpm)

At 5000 psig

NOTE:-THIS PUMP MODEL CAN ALSO BE USED WITH EXTERNAL LUBRICATION SYSTEM TO INCREASE THE PUMP CAPACITY UPTO 125 HP WITH SAME PLUNGER DIA (MODEL RRP 24 TH)

SPECIFICATIONS

	ENGLISH		METRIC		MAINTENANCE FEATURES
Pump size(max .Plunger Dia x Stroke)	Inches	2¼ x 4	mm	57 x 102	<ul style="list-style-type: none"> • Horizontal design • Large power end access covers and doors • Outside access forbearing adjustment • Separate crosshead–plunger shank construction • Open frame cradles • Removable stuffing boxes
Standard Plunger Sizes	Inches	1-1/4,1-3/8,1-1/2, 1-5/8, 1-3/4, 1-7/8, 2, 2-1/8 and 2-1/4	mm	32, 35, 38, 41, 44,48, 51, 54 and 57	
Rated bhp at 450rpm	hp	100	Kw	75	
Hydrostatic Test Pressure: Discharge	psi	7500	kPa	51710	
	Suction	psi	412.5	kPa	
Maximum Working Pressure: Discharge	psi	5000	kPa	34474	
	Suction	psi	275	kPa	
Two Suction Connection: Pipe Size	Inches	3", Sch-160	mm	76, Sch-160	
Two Discharge Connection: Pipe Size	Inches	2", Sch-160	mm	51, Sch-160	
Crank Shaft Extension: Diameter	Inches	3.750	mm	95	
	Length	Inches	7½	mm	
Keyway (Width x Depth)	Inches	7/8 x 7/16	mm	22 x 11	
	Accessory Gear Units Reduction Ratios				
		2.596:1		2.596:1	
		3.109:1		3.109:1	
		3.947:1		3.947:1	
		6.192:1		6.192:1	
Rated Plunger Rod Load	Pounds	6600	N	29358	
Oil Capacity (Crank Case)	Gallons	10	Litre	38	
Gear Unit (Capacity Varies with Gear Ratio)	Gallons ----		---		
Weight (On wooden shipping skid)(Est.)	Pounds	1700	Kg	771	
Gear Unit (weight Varies with Gear Ratio) (Est.)	Pounds	575	Kg	261	

PLUNGER DIA (INCH)	PLUNGER DIA (mm)	STUFFING BOX BORE (INCH)	STUFFING BOX BORE (mm)
1¼ - 1½	32 – 38	2¼	57
1⅝ - 1⅞	41 – 48	2⅝	67
2 - 2¼	51 – 57	3	76

PUMP PERFORMANCE DATA

ENGLISH UNIT

Plgr. Dia (inch)	Plunger Area (Sq. inch)	Displacement (Gal. Per Rev.)	Maximum Pressure (psi)	100rpm		150rpm		200rpm		250rpm		300rpm		350rpm		400rpm		450rpm	
				bpd	gpm	bpd	gpm	bpd	gpm	bpd	gpm	bpd	gpm	bpd	gpm	bpd	gpm	bpd	gpm
1¼	1.2272	0.0637	5000	219	6.39	328	9.57	437	12.75	546	15.93	656	19.13	765	22.31	874	25.49	984	28.70
1½	1.4849	0.0771	4445	265	7.73	397	11.58	529	15.43	661	19.28	793	23.13	926	27.01	1058	30.86	1190	34.71
1¾	1.7671	0.0918	3735	315	9.19	472	13.77	629	18.35	787	22.95	944	27.53	1102	32.14	1259	36.72	1416	41.30
1"	2.0739	0.1077	3182	370	10.79	554	16.16	739	21.55	923	26.92	1108	32.32	1293	37.71	1478	43.11	1662	48.48
1¼	2.4053	0.1249	2744	429	12.51	643	18.75	857	25.00	1071	31.24	1285	37.48	1499	43.72	1714	49.99	1928	56.23
1½	2.7612	0.1434	2390	492	14.35	738	21.53	984	28.70	1229	35.85	1475	43.02	1721	50.20	1967	57.37	2213	64.55
2	3.1416	0.1632	2101	560	16.33	839	24.47	1119	32.64	1399	40.80	1679	48.97	1958	57.11	2238	65.28	2518	73.44
2¼	3.5466	0.1842	1861	632	18.43	948	27.65	1263	36.84	1579	46.05	1895	55.27	2211	64.49	2527	73.70	2843	82.92
2½	3.9761	0.2065	1660	708	20.65	1062	30.98	1416	41.30	1770	51.63	2125	61.98	2479	72.30	2833	82.63	3187	92.95
Brake Horse Power Required				22		33		44		56		67		78		89		100	

METRIC UNIT

Plgr. Dia (mm)	Plunger Area (cm ²)	Displacement L / Rev.)	Maximum Pressure (kPa)	100rpm		150rpm		200rpm		250rpm		300rpm		350rpm		400rpm		450rpm	
				m ³ / d	L/s	m ³ / d	L/s	m ³ / d	L/s	m ³ / d	L/s	m ³ / d	L/s	m ³ / d	L/s	m ³ / d	L/s	m ³ / d	L/s
32	7.9173	0.2413	34474	35	0.41	52	0.60	69	0.80	87	1.01	104	1.20	122	1.41	139	1.61	156	1.81
35	9.5799	0.2920	30647	42	0.49	63	0.73	84	0.97	105	1.22	126	1.46	147	1.70	168	1.94	189	2.19
38	11.4009	0.3475	25751	50	0.58	75	0.87	100	1.16	125	1.45	150	1.74	175	2.03	200	2.31	225	2.60
41	13.3802	0.4078	21942	59	0.68	88	1.02	117	1.35	147	1.70	176	2.04	206	2.38	235	2.72	264	3.06
44	15.5179	0.4730	18919	68	0.79	102	1.18	136	1.57	170	1.97	204	2.36	238	2.75	272	3.15	306	3.54
48	17.8139	0.5430	16481	78	0.90	117	1.35	156	1.81	195	2.26	235	2.72	274	3.17	313	3.62	352	4.07
51	20.2683	0.6178	14485	89	1.03	133	1.54	178	2.06	222	2.57	267	3.09	311	3.60	356	4.12	400	4.63
54	22.8810	0.6974	12831	100	1.16	151	1.75	201	2.33	251	2.91	301	3.48	351	4.06	402	4.65	452	5.23
57	25.6521	0.7819	11445	113	1.31	169	1.96	225	2.60	281	3.25	338	3.91	394	4.56	450	5.21	507	5.87
Kilo-watt Input				17		25		33		41		50		58		66		75	

ENGLISH AND METRIC

Gear Unit Pinion Shaft r / min at Gear Ratios of:	2.596:1	260	389	519	649	779	909	1038	1168
	3.109:1	311	466	622	777	933	1088	1244	1399
	3.947:1	396	592	789	987	1184	1381	1579	1776
	6.192:1	619	929	1238	1548	1858	2167	2477	2786

PUMP MODEL

TRIPLEX PLUNGER PUMP RRP 34 T



This four-inch stroke pump is equipped with mono block Forged Steel fluid end, designed to handle various fluid.

Working Pressure

Upto 3,180 psig

Displacement

4,760 bpd (138.83 gpm)

at 1111 psig

1662 bpd (48.48 gpm)

At 3180 psig

NOTE:-THIS PUMP MODEL CAN ALSO BE USED WITH EXTERNAL LUBRICATION SYSTEM TO INCREASE THE PUMP CAPACITY UPTO 125 HP WITH SAME PLUNGER DIA (MODEL RRP 34 TH)

SPECIFICATIONS

	ENGLISH		METRIC		MAINTENANCE FEATURES
Pump size(max .Plunger Dia x Stroke)	Inches	3x 4	mm	76 x 102	
Standard Plunger Sizes	Inches	1-5/8,1-3/4,1-7/8, 2, 2-1/8, 2-1/4, 2-3/8, 2-1/2,2-5/8, 2-3/4, 2-7/8 and 3	mm	41, 44, 48, 51, 54, 57, 60, 64, 67, 70, 73 and 76	
Rated bhp at 450rpm	hp	100	Kw	75	
Hydrostatic Test Pressure: Discharge	psi	4770	kPa	32888	
Suction	psi	412.5	kPa	2844	
Maximum Working Pressure: Discharge	psi	3180	kPa	21925	
Suction	psi	275	kPa	1896	
Two Suction Connection: Pipe Size	Inches	4", Sch-40	mm	102, Sch-40	
Two Discharge Connection: Pipe Size	Inches	3", Sch-160	mm	76, Sch-160	
Crank Shaft Extension: Diameter	Inches	3.750	mm	95	
Length	Inches	7½	mm	191	
Keyway (Width x Depth)	Inches	7/8 x 7/16	mm	22 x 11	
Accessory Gear Units Reduction Ratios		2.596:1		2.596:1	
		3.109:1		3.109:1	
		3.947:1		3.947:1	
		6.192:1		6.192:1	
Rated Plunger Rod Load	Pounds	6600	N	29358	
Oil Capacity (Crank Case)	Gallons	10	Litre	38	
Gear Unit (Capacity Varies with Gear Ratio)	Gallons ----		---		
Weight (On wooden shipping skid)(Est.)	Pounds	1685	Kg	764	
Gear Unit (weight Varies with Gear Ratio) (Est.)	Pounds	575	Kg	261	

PLUNGER DIA (INCH)	PLUNGER DIA (mm)	STUFFING BOX BORE (INCH)	STUFFING BOX BORE (mm)
1 5/8 - 1 7/8	41 - 48	2 5/8	67
2 - 2 1/4	51 - 57	3	76
2 3/8 - 2 5/8	60 - 67	3 3/8	86
2 3/4 - 3	70 - 76	3 3/4	95

PUMP PERFORMANCE DATA

ENGLISH UNIT

Plgr. Dia (inch)	Plunger Area (Sq. inch)	Displacement (Gal. Per Rev.)	Maximum Pressure (psi)	100rpm		150rpm		200rpm		250rpm		300rpm		350rpm		400rpm		450rpm	
				bpd	gpm	bpd	gpm	bpd	gpm	bpd	gpm	bpd	gpm	bpd	gpm	bpd	gpm	bpd	gpm
1%	2.0739	0.1077	3180	369	10.76	554	16.16	739	21.55	923	26.92	1108	32.32	1293	37.71	1478	43.11	1662	48.48
1%	2.4053	0.1249	2740	428	12.48	643	18.75	857	25.00	1071	31.24	1285	37.48	1499	43.72	1714	49.99	1928	56.23
1%	2.7612	0.1434	2390	492	14.35	738	21.53	984	28.70	1229	35.85	1475	43.02	1721	50.20	1967	57.37	2213	64.55
2	3.1416	0.1632	2100	560	16.33	839	24.47	1119	32.64	1399	40.80	1679	48.97	1958	57.11	2238	65.28	2518	73.44
2%	3.5466	0.1842	1860	632	18.43	948	27.65	1263	36.84	1579	46.05	1895	55.27	2211	64.49	2527	73.70	2843	82.92
2%	3.9761	0.2065	1660	708	20.65	1062	30.98	1416	41.30	1770	51.63	2125	61.98	2479	72.30	2833	82.63	3187	92.95
2%	4.4301	0.2301	1500	789	23.01	1184	34.53	1578	46.03	1973	57.55	2367	69.04	2762	80.56	3156	92.05	3551	103.57
2%	4.9087	0.2550	1340	874	25.49	1311	38.24	1749	51.01	2186	63.76	2623	76.50	3060	89.25	3497	102.00	3934	114.74
2%	5.4119	0.2811	1215	964	28.12	1446	42.18	1928	56.23	2410	70.29	2892	84.35	3374	98.41	3856	112.47	4338	126.53
2%	5.9396	0.3085	1111	1058	30.86	1587	46.29	2116	61.72	2645	77.15	3174	92.58	3703	108.00	4232	123.43	4760	138.83
2%	6.4918	0.3372	1017	1156	33.72	1734	50.58	2312	67.43	2891	84.32	3469	101.18	4047	118.04	4625	134.90	---	---
3	7.0686	0.3672	934	1259	36.72	1888	55.07	2518	73.44	3147	91.79	3777	110.16	4406	128.51	4721	137.70	---	---
Brake Horse Power Required				22		33		44		56		67		78		89		100	

METRIC UNIT

Plgr. Dia (mm)	Plunger Area (cm ²)	Displacement (L / Rev.)	Maximum Pressure (kPa)	100rpm		150rpm		200rpm		250rpm		300rpm		350rpm		400rpm		450rpm	
				m ³ /d	L/s	m ³ /d	L/s	m ³ /d	L/s	m ³ /d	L/s	m ³ /d	L/s	m ³ /d	L/s	m ³ /d	L/s	m ³ /d	L/s
41	13.3802	0.4078	21925	59	0.68	88	1.02	117	1.35	147	1.70	176	2.04	206	2.38	235	2.72	264	3.06
44	15.5179	0.4730	18891	68	0.79	102	1.18	136	1.57	170	1.97	204	2.36	238	2.75	272	3.15	306	3.54
48	17.8139	0.5430	16478	78	0.90	117	1.35	156	1.81	195	2.26	235	2.72	274	3.17	313	3.62	352	4.07
51	20.2683	0.6178	14479	89	1.03	133	1.54	178	2.06	222	2.57	267	3.09	311	3.60	356	4.12	400	4.63
54	22.8810	0.6974	12824	100	1.16	151	1.75	201	2.33	251	2.91	301	3.48	351	4.06	402	4.65	452	5.23
57	25.6521	0.7819	11445	113	1.31	169	1.96	225	2.60	281	3.25	338	3.91	394	4.56	450	5.21	507	5.87
60	28.5815	0.8712	10342	125	1.45	188	2.18	251	2.91	314	3.63	376	4.35	439	5.08	502	5.81	565	6.54
64	31.6692	0.9653	9239	139	1.61	208	2.41	278	3.22	347	4.02	417	4.83	486	5.63	556	6.44	625	7.23
67	34.9153	1.0642	8377	153	1.77	230	2.66	306	3.54	383	4.43	460	5.32	536	6.20	613	7.09	690	7.99
70	38.3198	1.1680	7660	168	1.94	252	2.92	336	3.89	420	4.86	505	5.84	589	6.82	673	7.79	757	8.76
73	41.8825	1.2766	7011	184	2.13	276	3.19	368	4.26	460	5.32	551	6.38	643	7.44	735	8.51	---	---
76	45.6037	1.3900	6440	200	2.31	300	3.47	400	4.63	500	5.79	600	6.94	701	8.11	801	9.27	---	---
Kilo-watt input				17		25		33		41		50		58		66		75	

ENGLISH AND METRIC

Gear Unit Pinion Shaft r / min at Gear Ratios of:	2.596:1	260	389	519	649	779	909	1038	1168
	3.109:1	311	466	622	777	933	1088	1244	1399
	3.947:1	395	592	789	987	1184	1381	1579	1776
	6.192:1	619	929	1238	1548	1858	2167	2477	2786

PUMP MODEL

TRIPLEX PLUNGER PUMP RRP 44 T



This four-inch stroke pump is equipped with mono block Forged Steel fluid end, designed to handle various fluid.

Working Pressure

Upto 1,500 psig

Displacement

10,076 bpd (293.76 gpm)

at 525 psig

3,552 bpd (103.56 gpm)

at 1,500 psig

NOTE:-THIS PUMP MODEL CAN ALSO BE USED WITH EXTERNAL LUBRICATION SYSTEM TO INCREASE THE PUMP CAPACITY UPTO 125 HP WITH SAME PLUNGER DIA (MODEL RRP 44 TH)

SPECIFICATIONS

	ENGLISH		METRIC		MAINTENANCE FEATURES
Pump size(max .Plunger Dia x Stroke)	Inches	4x 4	mm	102 x 102	
Standard Plunger Sizes	Inches	2-3/8, 2-1/2, 2-5/8, 2-3/4, 2-7/8, 3, 3-1/4, 3-1/2, 3-3/4 and 4	mm	60, 64, 67, 70, 73, 76, 83, 89, 95, and 102	
Rated bhp at 450rpm	hp	100	Kw	75	
Hydrostatic Test Pressure: Discharge	psi	2250	kPa	15513	
Suction	psi	412.5	kPa	2844	
Maximum Working Pressure: Discharge	psi	1500	kPa	10342	
Suction	psi	275	kPa	1896	
Two Suction Connection: Pipe Size	Inches	6", Sch-40	mm	152, Sch-40	
Two Discharge Connection: Pipe Size	Inches	3", Sch-160	mm	76, Sch-160	
Crank Shaft Extension: Diameter	Inches	3.750	mm	95	
Length	Inches	7½	mm	191	
Keyway (Width x Depth)	Inches	7/8x7/16	mm	28 x 11	
Accessory Gear Units Reduction Ratios		2.596:1		2.596:1	
		3.109:1		3.109:1	
		3.947:1		3.947:1	
		6.192:1		6.192:1	
Rated Plunger Rod Load	Pounds	6600	N	29358	
Oil Capacity (Crank Case)	Gallons	10	Litre	38	
Gear Unit (Capacity Varies with Gear Ratio)	Gallons		---		
Weight (On wooden shipping skid)(Est.)	Pounds	1705	Kg	773	
Gear Unit (weight Varies with Gear Ratio) (Est.)	Pounds	575	Kg	261	

PLUNGER DIA (INCH)	PLUNGER DIA (mm)	STUFFING BOX BORE (INCH)	STUFFING BOX BORE (mm)
2 3/8 - 2 5/8	60 - 67	3 3/8	86
2 3/4 - 3	70 - 76	3 3/4	95
3 1/4 - 3 1/2	83 - 89	4 1/4	108
3 3/4 - 4	95 - 102	4 3/4	121

PUMP PERFORMANCE DATA

ENGLISH UNIT

Plgr. Dia (inch)	Plunger Area (Sq. inch)	Displacement (Gal. Per Rev.)	Maximum Pressure (psi)	100rpm		150rpm		200rpm		250rpm		300rpm		350rpm		400rpm		450rpm	
				bpd	gpm	bpd	gpm	bpd	gpm	bpd	gpm	bpd	gpm	bpd	gpm	bpd	gpm	bpd	gpm
2½	4.4301	0.2301	1500	789	23.01	1184	34.52	1579	46.03	1973	57.53	2368	69.04	2763	80.55	3157	92.05	3552	103.56
2½	4.9087	0.2550	1340	875	25.50	1312	38.25	1749	51	2187	63.75	2624	76.5	3061	89.25	3499	102	3936	114.75
2½	5.4119	0.2811	1215	964	28.11	1446	42.17	1929	56.23	2411	70.28	2893	84.34	3375	98.40	3857	112.45	4339	126.51
2½	5.9396	0.3085	1110	1058	30.85	1587	46.28	2117	61.71	2646	77.14	3175	92.56	3704	107.99	4233	123.42	4762	138.85
2½	6.4918	0.3372	1015	1157	33.72	1735	50.59	2313	67.45	2892	84.31	3470	101.17	4049	118.03	4627	134.89	5205	151.76
3	7.0686	0.3672	930	1259	36.72	1889	55.08	2519	73.44	3149	91.80	3778	110.16	4408	128.52	5038	146.88	5668	165.24
3¼	8.2958	0.4309	795	1478	43.09	2217	64.64	2956	86.19	3695	107.74	4434	129.28	5174	150.83	5913	172.38	6652	193.93
3½	9.6211	0.4998	685	1714	49.98	2571	74.97	3429	99.96	4286	124.95	5143	149.94	6000	174.93	6857	199.92	7714	224.91
3¾	11.045	0.5737	595	1968	57.37	2952	86.06	3936	114.75	4920	143.44	5904	172.12	6888	200.81	7872	229.50	8856	258.19
4	12.566	0.6528	525	2239	65.28	3359	97.92	4478	130.56	5598	163.20	6717	195.84	7837	228.48	8956	261.12	10076	293.76
Brake Horse Power Required				22		33		44		56		67		78		89		100	

METRIC UNIT

Plgr. Dia (mm)	Plunger Area (cm ²)	Displacement (L / Rev.)	Maximum Pressure (kPa)	100rpm		150rpm		200rpm		250rpm		300rpm		350rpm		400rpm		450rpm	
				m ³ /d	L/s	m ³ /d	L/s	m ³ /d	L/s	m ³ /d	L/s	m ³ /d	L/s	m ³ /d	L/s	m ³ /d	L/s	m ³ /d	L/s
60	28.581	0.8712	10342	125	1.45	188	2.18	251	2.9	314	3.63	376	4.36	439	5.08	502	5.81	565	6.53
64	31.669	0.9653	9239	139	1.61	208	2.41	278	3.22	347	4.02	417	4.83	486	5.63	556	6.44	625	7.24
68	34.915	1.0642	8377	153	1.77	230	2.66	306	3.55	383	4.43	460	5.32	536	6.21	613	7.09	690	7.98
70	38.320	1.1680	7653	168	1.95	252	2.92	336	3.89	420	4.87	505	5.84	589	6.81	673	7.79	757	8.76
73	41.882	1.2766	6998	184	2.13	276	3.19	368	4.26	460	5.32	551	6.38	643	7.45	735	8.51	827	9.57
76	45.604	1.3900	6412	200	2.32	300	3.48	400	4.63	500	5.79	600	6.95	701	8.11	801	9.27	901	10.43
82	53.521	1.6313	5481	235	2.72	352	4.08	470	5.44	587	6.8	705	8.16	822	9.52	940	10.86	1057	12.24
90	62.071	1.8919	4723	272	3.15	409	4.73	545	6.31	681	7.88	817	9.46	954	11.04	1090	12.61	1226	14.19
95	71.258	2.1719	4102	313	3.62	469	5.43	625	7.24	782	9.05	938	10.86	1095	12.67	1251	14.48	1407	16.29
102	81.071	2.4711	3620	356	4.12	534	6.18	712	8.24	890	10.3	1068	12.36	1245	14.41	1423	16.47	1601	18.53
Kilo-watt Input				17		25		33		41		50		58		66		75	

ENGLISH AND METRIC

Gear Unit Pinion Shaft r / min at Gear Ratios of:	2.596:1	260	389	519	649	779	909	1038	1168
	3.109:1	311	466	622	777	933	1088	1244	1399
	3.947:1	396	592	789	987	1184	1381	1579	1776
	6.192:1	619	929	1238	1548	1858	2167	2477	2786

PUMP MODEL

TRIPLEX PLUNGER PUMP RRP 16 T



This six - inch stroke pump is equipped with mono block Forged Steel fluid end, designed to handle various fluid.

Working Pressure

Upto 5,650 psig

Displacement

2952 bpd (86.10 gpm)

at 2870 psig

1511 bpd (44.07 gpm)

at 5650 psig

NOTE:-THIS PUMP MODEL CAN ALSO BE USED WITH INTERNAL GEAR REDUCTION SYSTEM (MODEL RRP 16 TG)

SPECIFICATIONS

	ENGLISH		METRIC		MAINTENANCE FEATURES	
Pump size(max .Plunger Dia x Stroke)	Inches	1½ x 6	mm	48 x 152		<ul style="list-style-type: none"> • Horizontal design • Large power end access covers and doors • Outside access forbearing adjustment • Separate crosshead–plunger shank construction • Open frame cradles • Removable stuffing boxes
Standard Plunger Sizes	Inches	1-1/2, 1-9/16, 1-5/8, 1-11/16, 1-3/4, 1-13/16, and 1-7/8	mm	38, 40, 41, 43,44, 46, and 48		
Rated bhp at 400rpm	hp	160	Kw	119		
Hydrostatic Test Pressure: Discharge	psi	8475	kPa	58433		
	Suction	psi	1080	kPa	7446	
Maximum Working Pressure: Discharge	psi	5650	kPa	38955		
	Suction	psi	720	kPa	4964	
Two Flanged Suction Connection: Pipe Size	Inches	4"	mm	102		
	ANSI RATING	Class	300	Class	300	
Two Flanged Discharge Connection: Pipe Size	Inches	2	Inches	51		
	ANSI RATING	Class	2500	Class	2500	
Crankshaft Extension:						
Diameter	Inches	4.495	mm	114		
Length	Inches	8½	mm	216		
Keyway (Width x Depth)	Inches	1 x ¾	mm	25 x 10		
Rated Plunger Rod Load	Pounds	10000	N	44482		
Oil Capacity (Crank Case)	Gallons	21	Litre	79		
Weight (On wooden shipping skid)(Est.)	Pounds	4348	Kg	1972		

PLUNGER DIA (INCH)	PLUNGER DIA (mm)	STUFFING BOX BORE (INCH)	STUFFING BOX BORE (mm)
1½ - 1⅞	38 - 48	2½	64

PUMP PERFORMANCE DATA

ENGLISH UNIT

Plgr.Dia (inch)	Plunger Area (Sq.inch)	Displacement (Gal.PerRev.)	Maximum Pressure (psi)	100rpm		150 rpm		200 rpm		250 rpm		300 rpm		* 320 rpm		400		
				bpd	gpm	bpd	gpm	bpd	gpm	bpd	gpm	bpd	gpm	bpd	gpm	psi	bpd	gpm
1 ¹ / ₂	1.7671	0.1377	5650	472	13.77	708	20.65	945	27.56	1181	34.45	1417	41.33	1511	44.07	4480	1889	55.10
1 ⁹ / ₁₆	1.9175	0.1494	5220	512	14.93	769	22.43	1025	29.90	1281	37.36	1537	44.83	1640	47.83	4130	2050	59.79
1 ⁵ / ₈	2.0739	0.1616	4820	554	16.16	831	24.24	1109	32.35	1386	40.43	1663	48.50	1774	51.74	3820	2217	64.66
1 ¹¹ / ₁₆	2.2365	0.1743	4470	598	17.44	897	26.16	1196	34.88	1494	43.58	1793	52.30	1913	55.80	3540	2391	69.74
1 ³ / ₄	2.4053	0.1874	4160	643	18.75	964	28.12	1286	37.51	1607	46.87	1929	56.26	2057	60.00	3290	2571	74.99
1 ¹³ / ₁₆	2.5082	0.2011	3875	690	20.13	1034	30.16	1379	40.22	1724	50.28	2069	60.35	2207	64.37	3070	2758	80.44
1 ⁷ / ₈	2.7612	0.2152	3620	738	21.53	1107	32.29	1476	43.05	1845	53.81	2214	64.58	2362	68.89	2870	2952	86.10
Brake Horse Power Required				50		75		100		125		150		160		160		

METRIC UNIT

Plgr.Dia (mm)	Plunger Area (cm ²)	Displacement (L / Rev.)	Maximum Pressure (kPa)	100 rpm		150 rpm		200 rpm		250 rpm		300 rpm		* 320 rpm		400 rpm		
				m ³ /d	L/s	m ³ /d	L/s	m ³ /d	L/s	m ³ /d	L/s	m ³ /d	L/s	m ³ /d	L/s	kpa	m ³ /d	L/s
38	11.4009	0.5212	38955	75	0.87	113	1.31	150	1.74	188	2.18	225	2.60	240	2.78	30889	300	3.47
40	12.3708	0.5656	35991	81	0.94	122	1.41	163	1.89	204	2.36	244	2.82	261	3.02	28475	326	3.77
41	13.3802	0.6117	33232	88	1.02	132	1.53	176	2.04	220	2.55	264	3.06	282	3.26	26338	352	4.08
43	14.4293	0.6597	30820	95	1.10	142	1.64	190	2.20	237	2.74	285	3.30	304	3.52	24407	380	4.40
44	15.5179	0.7095	28682	102	1.18	153	1.77	204	2.36	255	2.95	306	3.54	327	3.78	22684	409	4.73
46	16.6461	0.7611	26717	110	1.27	164	1.90	219	2.53	274	3.17	329	3.81	351	4.06	21167	438	5.07
48	17.8139	0.8145	24959	117	1.35	176	2.04	235	2.72	293	3.39	352	4.07	375	4.34	19788	469	5.43
Kilo-watt Input				38		56		75		94		113		119		119		

* PUMP SPEEDS IN EXCESS OF 320 RPM REQUIERES SPECIFIC APPROVAL OF THE MANUFACTURER, VISCOSITY, TEMPERATURE, VELOCITIES AND OTHER FLUID PROPERTIES OR CHARACTERISTICS COMBINED WITH THE INHERENT MECHANICAL EFFICIENCIES OF PUMP MAY RESULT IN LESS THAN OPTIMUM OPERATIONS. WE HAVE APPLIED THIS CONSERVATISM TO ASSURE YOU TOTAL PERFORMANCE.

PUMP MODEL

TRIPLEX PLUNGER PUMP RRP 36 T



This six - inch stroke pump is equipped with mono block Forged Steel fluid end, designed to handle various fluid.

Working Pressure

Upto 3,180 psig

Displacement

7557 bpd (220.41 gpm)

at 1120 psig

2687 bpd (78.37 gpm)

At 3180 psig

NOTE:-THIS PUMP MODEL CAN ALSO BE USED WITH INTERNAL GEAR REDUCTION SYSTEM (MODEL RRP 36 TG)

SPECIFICATIONS				MAINTENANCE FEATURES	
	ENGLISH		METRIC		
Pump size(max Plunger Dia x Stroke)	Inches	3 x 6	mm	76 x 152	<ul style="list-style-type: none"> • Horizontal design • Large power end access covers and doors • Outside access for bearing adjustment • Separate crosshead-plunger shank construction • Open frame cradles • Removable stuffing boxes
Standard Plunger Sizes	Inches	2, 2-1/8, 2-1/4, 2-3/8, 2-1/2, 2-5/8, 2-3/4, 2-7/8 and 3	mm	51, 54, 57, 60, 64, 67, 70, 73 and 76	
Rated bhp at 400rpm	hp	160	Kw	119	
Hydrostatic Test Pressure: Discharge	psi	4770	kPa	32888	
	Suction	psi	412.5	kPa	
Maximum Working Pressure: Discharge	psi	3180	kPa	21925	
	Suction	psi	275	kPa	
Two Flanged Suction Connection: Pipe Size	Inches	4"	mm	102	
ANSI Rating	Class	150	Class	150	
Two Flanged Discharge Connection: Pipe Size	Inches	2½	mm	64	
ANSI Rating	Class	1500	Class	1500	
Crank Shaft Extension: Diameter	Inches	4.495	mm	114	
	Length	Inches	8½	mm	
Keyway (Width x Depth)	Inches	1 x ¾	mm	25 x 10	
Rated Plunger Rod Load	Pounds	10000	N	44482	
Oil Capacity (Crank Case).	Gallons	21	Litre	79	
Weight (On wooden shipping skid)(Est.)	Pounds	3410	Kg	1547	

PLUNGER DIA (INCH)	PLUNGER DIA (mm)	STUFFING BOX BORE (INCH)	STUFFING BOX BORE (mm)
2 - 2 ¾	51 - 60	3 ¼	83
2 ½ - 3	64 - 76	4 ⅛	105

PUMP PERFORMANCE DATA

ENGLISH UNIT

Plgr. Dia (inch)	Plunger Area (Sq. inch)	Displacement (Gal. Per Rev.)	Maximum Pressure (psi)	100 rpm		150 rpm		200 rpm		250 rpm		300 rpm		* 320 rpm		400		
				bpd	gpm	bpd	gpm	bpd	gpm	bpd	gpm	bpd	gpm	bpd	gpm	psi	bpd	gpm
2	3.1416	0.2448	3180	840	24.50	1259	36.72	1679	48.97	2099	61.22	2519	73.47	2687	78.37	2520	3359	97.97
2½	3.5466	0.2764	2820	948	27.65	1422	41.48	1896	55.30	2370	69.13	2844	82.95	3033	88.46	2230	3792	110.60
2¾	3.9761	0.3098	2520	1063	31.00	1594	46.49	2125	61.98	2657	77.50	3188	92.98	3401	99.20	1990	4251	123.99
2⅞	4.4301	0.3452	2260	1184	34.53	1776	51.80	2368	69.01	2960	86.33	3552	103.60	3789	110.51	1790	4736	138.13
3	4.9087	0.3825	2040	1312	38.27	1968	57.40	2624	76.53	3280	95.67	3936	114.80	4198	122.44	1610	5248	153.07
3½	5.4119	0.4217	1840	1446	42.18	2170	63.29	2893	84.38	3616	105.47	4339	126.55	4629	135.01	1463	5786	168.76
3¾	5.9396	0.4628	1680	1587	46.29	2381	69.45	3175	92.60	3969	115.76	4762	138.89	5080	148.17	1335	6350	185.21
3⅞	6.4918	0.5059	1540	1735	50.60	2603	75.92	3470	101.21	4338	126.53	5205	151.81	5552	161.93	1220	6940	202.42
4	7.0686	0.5508	1420	1889	55.10	2834	82.62	3778	110.19	4723	137.75	5668	165.32	6046	176.34	1120	7557	220.41
Brake Horse Power Required				50		75		100		125		150		160		160		

METRIC UNIT

Plgr. Dia (mm)	Plunger Area (cm²)	Displacement (L / Rev.)	Maximum Pressure (kPa)	100rpm		150 rpm		200 rpm		250 rpm		300 rpm		* 320 rpm		400 rpm		
				m³/d	L/s	m³/d	L/s	m³/d	L/s	m³/d	L/s	m³/d	L/s	m³/d	L/s	kpa	m³/d	L/s
51	20.2683	0.9267	21925	133	1.54	200	2.31	267	3.09	334	3.87	400	4.63	427	4.94	17382	534	6.18
54	22.8810	1.0461	19443	151	1.75	226	2.62	301	3.48	377	4.36	452	5.23	482	5.58	15397	603	6.98
57	25.6521	1.1728	17375	169	1.96	253	2.93	338	3.91	422	4.88	507	5.87	540	6.25	13734	676	7.82
60	28.5815	1.3067	15582	188	2.18	282	3.26	376	4.35	470	5.44	565	6.54	602	6.97	12326	753	8.72
64	31.6692	1.4479	14065	208	2.41	313	3.62	417	4.83	521	6.03	625	7.23	667	7.72	11124	834	9.65
67	34.9153	1.5963	12686	230	2.66	345	3.99	460	5.32	575	6.66	690	7.99	736	8.52	10090	919	10.64
70	38.3198	1.7520	11583	252	2.92	378	4.38	505	5.84	631	7.30	757	8.76	807	9.34	9194	1009	11.68
73	41.8825	1.9149	10618	276	3.19	414	4.79	551	6.38	689	7.97	827	9.57	882	10.21	8412	1103	12.77
76	45.6037	2.0850	9791	300	3.47	450	5.21	660	7.64	751	8.69	901	10.43	961	11.12	7725	1201	13.90
Kilowatt Required				38		56		75		94		113		119		119		

*PUMP SPEEDS IN EXCESS OF 320 RPM REQUIERES SPECIFIC APPROVAL OF THE MANUFACTURER, VISCOSITY, TEMPERATURE, VELOCITIES AND OTHER FLUID PROPERTIES OR CHARACTERISTICS COMBINED WITH THE INHERENT MECHANICAL EFFICIENCIES OF PUMP MAY RESULT IN LESS THAN OPTIMUM OPERATIONS. WE HAVE APPLIED THIS CONSERVATISM TO ASSURE YOU TOTAL PERFORMANCE.

PUMP MODEL

TRIPLEX PLUNGER PUMP RRP 46 T



This six-inch stroke pump is equipped with mono block Forged Steel fluid end, designed to handle various fluid.

Working Pressure

Upto 1,420 psig

Displacement

17003 bpd (495.92 gpm)

at 497 psig

6046 bpd (176.34 gpm)

At 1420 psig

NOTE:-THIS PUMP MODEL CAN ALSO BE USED WITH INTERNAL GEAR REDUCTION SYSTEM (MODEL RRP 46 TG)

SPECIFICATIONS

	ENGLISH		METRIC		MAINTENANCE FEATURES
Pump size(max Plunger Dia x Stroke)	Inches	4½ x 6	mm	114 x 152	
Standard Plunger Sizes	Inches	3, 3-1/8, 3-1/4, 3-3/8, 3-1/2, 3-5/8, 3-3/4, 3-7/8, 4, 4-1/8, 4-1/4, and 4-1/2	mm	76, 79, 83, 86, 89, 92, 95, 98, 102, 105, 108 and 114	
Rated bhp at 400rpm	hp	160	Kw	119	
Hydrostatic Test Pressure: Discharge	psi	2130	kPa	14685	
	Suction	psi	412.5	kPa	2844
Maximum Working Pressure: Discharge	psi	1420	kPa	9791	
	Suction	psi	275	kPa	1896
Two Flanged Suction Connection: Pipe Size	Inches	6"	mm	152	
ANSI Rating	Class	150	Class	150	
Two Flanged Discharge Connection: Pipe Size	Inches	3	mm	76	
ANSI Rating	Class	600	Class	600	
Crank Shaft Extension: Diameter	Inches	4.495	mm	114	
	Length	Inches	8¾	mm	313
Keyway (Width x Depth)	Inches	1 x ¾	mm	25 x 10	
Rated Plunger Rod Load	Pounds	10000	N	44482	
Oil Capacity (Crank Case)	Gallons	25	Litre	95	
Weight (On wooden shipping skid) (Est.)	Pounds	3575	Kg	1622	

PLUNGER DIA (INCH)	PLUNGER DIA (mm)	STUFFING BOX BORE (INCH)	STUFFING BOX BORE (mm)
3	76	4¾	105
3¼ - 3½	83 - 89	4⅞	124
3⅝ - 4½	92 - 114	5¼	133

PUMP PERFORMANCE DATA

ENGLISH UNIT

Plgr.Dia (inch)	Plunger Area (Sq.inch)	Displacement (Gal.PerRev.)	Maximum Pressure (psi)	100 rpm		150 rpm		200 rpm		250 rpm		300 rpm		* 320 rpm		400		
				bpd	gpm	bpd	gpm	bpd	gpm	bpd	gpm	bpd	gpm	bpd	gpm	psi	bpd	gpm
3	7.0686	0.5508	1420	1889	55.10	2834	82.66	3778	110.19	4723	137.75	5668	165.32	6046	176.34	1120	7557	220.41
3 $\frac{1}{8}$	7.6699	0.5977	1300	2050	59.79	3075	89.69	4100	119.58	5125	149.48	6150	179.38	6560	191.33	1033	8200	239.17
3 $\frac{1}{4}$	8.2958	0.6464	1200	2217	64.66	3326	97.01	4434	129.33	5543	161.67	6652	194.02	7095	206.94	955	8869	258.68
3 $\frac{3}{8}$	8.9462	0.6971	1110	2391	69.74	3587	104.62	4782	139.48	5978	174.36	7173	209.21	7651	223.15	885	9564	278.95
3 $\frac{1}{2}$	9.6211	0.7497	1040	2571	74.99	3857	112.50	5143	150.00	6429	187.51	7714	224.99	8229	240.01	825	10286	300.01
3 $\frac{5}{8}$	10.321	0.8042	965	2758	80.44	4138	120.69	5517	160.91	6896	201.13	8275	241.35	8827	257.45	767	11034	321.83
3 $\frac{3}{4}$	11.045	0.8606	905	2952	86.10	4428	129.15	5904	172.20	7380	215.25	8856	258.30	9446	275.51	715	11808	344.40
3 $\frac{7}{8}$	11.793	0.9190	845	3152	91.93	4728	137.90	6304	183.87	7880	229.83	9456	275.80	10086	294.18	671	12608	367.73
4	12.566	0.9792	795	3359	97.97	5038	146.94	6717	195.91	8397	244.91	10076	293.88	10748	313.48	630	13435	391.85
4 $\frac{1}{8}$	13.364	1.0414	745	3572	104.18	5358	156.28	7144	208.37	8930	260.46	10716	312.55	11430	333.38	593	14287	416.70
4 $\frac{1}{4}$	14.186	1.1054	705	3792	110.60	5687	165.87	7583	221.17	9479	276.47	11375	331.77	12133	353.88	560	15166	442.34
4 $\frac{1}{2}$	15.904	1.2393	629	4251	123.99	6376	185.89	8502	247.98	10627	309.95	12752	371.93	13603	396.75	497	17003	495.92
Brake Horse Power Required				50		75		100		125		150		160		160		

METRIC UNIT

Plgr.Dia (mm)	Plunger Area (cm ²)	Displacement L / Rev.)	Maximum Pressure (kPa)	100rpm		150 rpm		200 rpm		250 rpm		300 rpm		* 320 rpm		400 rpm		
				m ³ /d	L/s	m ³ /d	L/s	m ³ /d	L/s	m ³ /d	L/s	m ³ /d	L/s	m ³ /d	L/s	kpa	m ³ /d	L/s
76	45.6037	2.0850	9791	300	3.47	451	5.22	601	6.96	751	8.69	901	10.43	961	11.12	7722	1201	13.90
79	49.4832	2.2625	8963	326	3.77	489	5.66	652	7.55	815	9.43	978	11.32	1043	12.07	7122	1304	15.09
83	53.5210	2.4469	8274	352	4.07	529	6.12	705	8.16	881	10.20	1058	12.25	1128	13.06	6584	1410	16.32
86	57.7171	2.6388	7653	380	4.40	570	6.60	760	8.80	950	11.00	1140	13.19	1216	14.07	6102	1521	17.60
89	62.0717	2.8379	7171	409	4.73	613	7.09	818	9.47	1022	11.83	1226	14.19	1308	15.14	5688	1635	18.92
92	66.5845	3.0442	6653	438	5.07	658	7.62	877	10.15	1096	12.69	1316	15.23	1403	16.24	5288	1754	20.30
95	71.2557	3.2577	6240	469	5.43	704	8.15	939	10.87	1173	13.58	1408	16.30	1502	17.38	4930	1877	21.72
98	76.0853	3.4788	5826	501	5.80	752	8.70	1002	11.60	1253	14.50	1503	17.40	1604	18.56	4626	2005	23.21
102	81.0732	3.7067	5481	534	6.18	801	9.27	1068	12.36	1335	15.45	1602	18.54	1709	19.78	4344	2136	24.72
105	86.2194	3.9421	5137	568	6.57	852	9.86	1136	13.15	1420	16.44	1704	19.72	1817	21.03	4089	2271	26.28
108	91.5240	4.1844	4861	603	6.98	904	10.46	1206	13.96	1507	17.44	1808	20.93	1929	22.33	3861	2411	27.91
114	102.6083	4.6913	4337	676	7.82	1014	11.74	1352	15.65	1690	19.56	2027	23.46	2163	25.03	3434	2703	31.28
Kilowatt Required				37		56		75		94		112		119		119		

*PUMP SPEEDS INCREASE IN EXCESS OF 320 RPM REQUIERES SPECIFIC APPROVAL OF THE MANUFACTURER, VISCOSITY, TEMPERATURE, VELOCITIES AND OTHER FLUID PROPERTIES OR CHARACTERISTICS COMBINED WITH THE INHERENT MECHANICAL EFFICIENCIES OF PUMP MAY RESULT IN LESS THAN OPTIMUM OPERATIONS. WE HAVE APPLIED THIS CONSERVATISM TO ASSURE YOU TOTAL PERFORMANCE.

PUMP MODEL

TRIPLEX PLUNGER PUMP RRP 56 TW



This six-inch stroke pump is equipped with mono block Forged Steel fluid end, designed to handle various fluid.

Working Pressure

Upto 1,040 psig

Displacement

20992 bpd (612.27 gpm)

at 403 psig

8229 bpd (240.01 gpm)

At 1040 psig

NOTE:-THIS PUMP MODEL CAN ALSO BE USED WITH INTERNAL GEAR REDUCTION SYSTEM (MODEL RRP 56 TGW)

SPECIFICATIONS					
	ENGLISH		METRIC		MAINTENANCE FEATURES
Pump size(max Plunger Dia x Stroke)	Inches	5 x 6	mm	127 x 152	
Standard Plunger Sizes	Inches	3-1/2, 3-3/4, 4, 4-1/4, 4-1/2, and 5	mm	89, 95, 102, 108, 114, and 127	
Rated bhp at 400rpm	hp	160	Kw	119	
Hydrostatic Test Pressure: Discharge	psi	1560	kPa	10756	
	Suction	psi	450	kPa	3103
Maximum Working Pressure: Discharge	psi	1040	kPa	7171	
	Suction	psi	300	kPa	2068
Two Flanged Suction Connection: Pipe Size	Inches	6"	mm	152	
ANSI Rating	Class	300	Class	300	
Two Flanged Discharge Connection: Pipe Size	Inches	4	mm	102	
ANSI Rating	Class	600	Class	600	
Crank Shaft Extension: Diameter	Inches	4.495	mm	114	
	Length	Inches	8½	mm	216
Keyway (Width x Depth)	Inches	1 x ¾	mm	25 x 10	
Rated Plunger Rod Load	Pounds	10000	N	44482	
Oil Capacity (Crank Case)	Gallons	21	Litre	79	
Weight (On wooden shipping skid) (Est.)	Pounds	3775	Kg	1712	

PLUNGER DIA (INCH)	PLUNGER DIA (mm)	STUFFING BOX BORE (INCH)	STUFFING BOX BORE (mm)
3½	89	4⅞	105
3¾ - 4½	95 - 114	5¼	133
5	127	6	152

PUMP PERFORMANCE DATA

ENGLISH UNIT

Plgr.Dia (inch)	Plunger Area	Displacement (Gal.PerRev.)	Maximum Pressure (psi)	100rpm		200 rpm		300 rpm		* 320 rpm		400		
	(Sq.inch)			bpd	gpm	bpd	gpm	bpd	gpm	bpd	gpm	psi	bpd	gpm
3½	9.6211	0.7497	1040	2571	74.99	5143	150.00	7714	224.99	8229	240.01	823	10286	300.01
3¾	11.045	0.8606	905	2952	86.10	5904	172.20	8856	258.30	9446	275.51	716	11808	344.40
4	12.566	0.9792	795	3359	97.97	6717	195.91	10076	293.88	10748	313.48	630	13435	391.85
4¼	14.186	1.1054	705	3792	110.60	7583	221.17	111375	3248.44	12133	353.88	558	15166	3359.01
4½	15.904	1.2393	625	4251	123.99	8502	247.98	12752	371.93	13603	396.75	497	17003	495.92
5	19.635	1.5300	505	5248	153.07	10496	306.13	15744	459.20	16793	489.80	403	20992	612.27
Brake Horse Power Required				50		100		150		160		160		

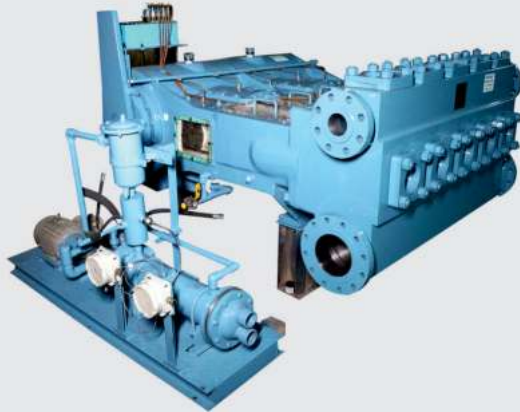
METRIC UNIT

Plgr.Dia (mm)	Plunger Area	Displacement (L / Rev.)	Maximum Pressure (kPa)	100rpm		200 rpm		300 rpm		* 320 rpm		400 rpm		
	(cm ²)			m ³ /d	L/s	m ³ /d	L/s	m ³ /d	L/s	m ³ /d	L/s	kpa	m ³ /d	L/s
89	62.0717	2.8379	7171	409	4.73	817	9.46	1226	14.19	1308	15.14	5674	1635	18.92
95	71.2557	3.2578	6240	469	5.43	938	10.86	1407	16.28	1501	17.37	4937	1876	21.71
102	81.0732	3.7067	5481	534	6.18	1068	12.36	1601	18.53	1708	19.77	4345	2135	24.71
108	91.5240	4.1845	4860	603	6.98	1205	13.95	1808	20.93	1928	22.31	3849	2410	27.89
114	102.6083	4.6912	4309	676	7.82	1351	15.64	2027	23.46	2162	25.02	3427	2702	31.27
127	126.6769	5.7917	3482	834	9.65	1668	19.31	2502	28.96	2669	30.89	2779	3336	38.61
Kilo-watt Input				38		75		113		119		119		

*PUMP SPEEDS IN EXCESS OF 250 RPM REQUIERES SPECIFIC APPROVAL OF THE MANUFACTURER, VISCOSITY, TEMPERATURE, VELOCITIES AND OTHER FLUID PROPERTIES OR CHARACTERISTICS COMBINED WITH THE INHERENT MECHANICAL EFFICIENCIES OF PUMP MAY RESULT IN LESS THAN OPTIMUM OPERATIONS. WE HAVE APPLIED THIS CONSERVATISM TO ASSURE YOU TOTAL PERFORMANCE.

PUMP MODEL

QUINTUPLEX PLUNGER PUMP RRP 36 Q



This six-inch stroke pump is equipped with mono block Forged Steel fluid end, designed to handle various fluid.

Working Pressure

Upto 3,180 psig

Displacement

11335 bpd (330.60 gpm)

at 1250 psig

4478 bpd (130.61 gpm)

At 3180 psig

SPECIFICATIONS

		ENGLISH	METRIC	MAINTENANCE FEATURES
Pump size	(max .Plunger Dia x Stroke)	Inches 3 X 6	mm 76 x 152	<ul style="list-style-type: none"> • Horizontal design • Large power end access covers and doors • Outside access for bearing adjustment • Separate crosshead-plunger shank construction • Open frame cradles • Removable stuffing boxes
Standard Plunger Sizes		Inches 2, 2-1/8, 2-1/4, 2-3/8, 2-1/2, 2-5/8, 2-3/4, 2-7/8, and 3	mm 51, 54, 57, 60, 64, 67, 70, 73 and 76	
Rated bhp at 360 rpm		hp 267	Kw 199	
Hydrostatic Test Pressure:	Discharge	psi 4770	kPa 32888	
	Suction	psi 1080	kPa 7446	
Maximum Working Pressure:	Discharge	psi 3180	kPa 21925	
	Suction	psi 720	kPa 4964	
Two Flanged Suction Connection:	Pipe Size	Inches 4"	mm 102	
	ANSI RATING	Class 300	Class 300	
Two Flanged Discharge Connection:	Pipe Size	Inches 3"	mm 76.	
	ANSI RATING	Class 1500	Class 1500	
Crank Shaft Extension:	Diameter	Inches 4.495	mm 114	
	Length	Inches 7¾	mm 197	
	Keyway (Width x Depth)	Inches 1 x 3/8	mm 25 x 10	
Accessory Gear Units Reduction Ratio		2.698:1	2.698:1	
		3.680:1	3.680:1	
		5.500:1	5.500:1	
		7.316:1	7.316:1	
		9.500:1	9.500:1	
Rated Plunger Rod Load		Pounds 10000	N 44482	
Oil Capacity (Crank Case).		Gallons 32	Litre 121	
Gear Unit		Gallons	Litre	
Weight (On wooden shipping skid)(Est.)		Pounds 6200	Kg 2812	
Gear Unit (Est..)		Pounds 2219	Kg 1007	

PLUNGER DIA (INCH)	PLUNGER DIA (mm)	STUFFING BOX BORE (INCH)	STUFFING BOX BORE (mm)
2 - 2 ³ / ₈	51 - 60	3 ¹ / ₄	83
2 ¹ / ₂ - 3	64 - 76	4 ¹ / ₈	105

PUMP PERFORMANCE DATA

ENGLISH UNIT

Plgr. Dia (inch)	Plunger Area (Sq. inch)	Displacement (Gal. Per Rev.)	Maximum Pressure (psi)	100rpm		150 rpm		200 rpm		250 rpm		300 rpm		* 320 rpm		360		
				bpd	gpm	bpd	gpm	bpd	gpm	bpd	gpm	bpd	gpm	bpd	gpm	psi	bpd	gpm
2	3.1416	0.408	3180	1399	40.80	2099	61.22	2799	81.64	3499	102.05	4198	122.44	4478	130.61	2800	5040	147.00
2½	3.5466	0.4606	2820	1580	46.08	2370	69.13	3160	92.17	3950	115.21	4740	138.25	5055	147.44	2480	5687	165.87
2¾	3.9761	0.5164	2520	1771	51.65	2657	77.50	3542	103.31	4428	129.15	5313	154.96	5668	165.32	2220	6376	185.97
2½	4.4301	0.5753	2260	1973	57.55	2960	86.33	3947	115.12	4934	143.91	5920	172.67	6315	184.19	1980	7104	207.20
2½	4.9087	0.6375	2040	2187	63.79	3280	95.67	4373	127.55	5467	159.45	6560	191.33	6997	204.08	1800	7872	229.60
2¾	5.4119	0.7028	1840	2411	70.32	3616	105.47	4822	140.64	6027	175.79	7232	210.93	7714	224.99	1630	8679	253.14
2¾	5.9396	0.7714	1680	2646	77.18	3969	115.76	5292	154.35	6615	192.94	7937	231.50	8467	246.95	1480	9525	277.81
2¾	6.4918	0.8431	1540	2892	84.35	4338	126.53	5784	168.70	7230	210.88	8675	253.02	9254	182.41	1360	10411	303.65
3	7.0686	0.9180	1420	3149	91.85	4723	82.62	6297	183.66	7872	229.60	9446	275.51	10076	293.88	1250	11335	330.60
Brake Horse Power Required				84		126		168		210		250		267		267		

METRIC UNIT

Plgr. Dia (mm)	Plunger Area (cm²)	Displacement (L / Rev.)	Maximum Pressure (kPa)	100rpm		150 rpm		200 rpm		250 rpm		300 rpm		* 320 rpm		400 rpm		
				m³/d	L/s	m³/d	L/s	m³/d	L/s	m³/d	L/s	m³/d	L/s	m³/d	L/s	kpa	m³/d	L/s
51	20.268	1.5444	21925	222	2.57	334	3.87	445	5.15	556	6.44	667	7.72	712	8.24	19305	801	9.27
54	22.881	1.7435	19443	251	2.91	377	4.36	502	5.81	628	7.27	753	8.72	803	9.29	17099	904	10.46
57	25.652	1.9547	17374	281	3.25	422	4.88	563	6.52	704	8.15	844	9.77	901	10.43	15306	1013	11.72
60	28.581	2.1779	15582	314	3.63	470	5.44	627	7.26	784	9.07	941	10.89	1004	11.62	13652	1129	13.07
64	31.669	2.4132	14065	347	4.02	521	6.03	695	8.04	869	10.06	1042	12.06	1112	12.87	12411	1251	14.48
67	34.915	2.6605	12686	383	4.43	575	6.66	766	8.87	958	11.09	1149	13.30	1226	14.19	11238	1379	15.96
70	38.320	2.9200	11583	420	4.86	631	7.30	841	9.73	1051	12.16	1261	14.59	1346	15.58	10204	1514	17.52
73	41.883	3.1914	10618	460	5.32	689	7.97	919	10.64	1149	13.30	1379	15.96	1471	17.03	9377	1654	19.14
76	45.604	3.4750	9791	500	5.79	751	8.69	1001	11.59	1251	14.48	1501	17.37	1601	18.53	8618	1801	20.84
Kilo-watt Input				63		94		126		157		188		201		201		

ENGLISH AND METRIC

Gear Unit Pinion Shaft r / min at Gear Ratios of:	2.698:1	270	405	540	675	809	863	971
	3.680:1	368	552	736	920	1104	1176	1325
	5.500:1	550	825	1100	1375	1650	1760	1980
	7.361:1	732	1097	1463	1829	2195	2341	2634
	9.500:1	950	1425	1900	2375	2850	3040	3420

* PUMP SPEEDS IN EXCESS OF 320 RPM REQUIRES SPECIFIC APPROVAL OF THE MANUFACTURER, VISCOSITY, TEMPERATURE, VELOCITIES AND OTHER FLUID PROPERTIES OR CHARACTERISTICS COMBINED WITH THE INHERENT MECHANICAL EFFICIENCIES OF PUMP MAY RESULT IN LESS THAN OPTIMUM OPERATIONS. WE HAVE APPLIED THIS CONSERVATISM TO ASSURE YOU TOTAL PERFORMANCE

PUMP MODEL

TRIPLEX PLUNGER PUMP RRP 38 TG



This eight-inch stroke pump is equipped with mono block Forged Steel fluid end, designed to handle various fluid.

Working Pressure

Upto 3,690 psig

Displacement

5668 bpd (165.32 gpm)

at 2830 psig

4339 bpd (126.55 gpm)

At 3690 psig

SPECIFICATIONS

		ENGLISH	METRIC	MAINTENANCE FEATURES
Pump size	(max .Plunger Dia x Stroke)	Inches 3 X 8	mm 76 x 203	<ul style="list-style-type: none"> • Horizontal design • Large power end access covers and doors • Outside access for bearing adjustment • Separate crosshead-plunger shank construction • Open frame cradles • Removable stuffing boxes
Standard Plunger Sizes		Inches 2-5/8, 2-3/4, 2-7/8 and 3	mm 67, 70, 73 and 76	
Rated bhp at 225 rpm		hp 300	Kw 224	
Hydrostatic Test Pressure:	Discharge	psi 5535	kPa 38162	
	Suction	psi 412.5	kPa 2844	
Maximum Working Pressure:	Discharge	psi 3690	kPa 25442	
	Suction	psi 275	kPa 1896	
Two Flanged Suction Connection:	Pipe Size	Inches 6"	mm 152	
	ANSI RATING	Class 150	Class 150	
Two Flanged Discharge Connection:	Pipe Size	Inches 3"	mm 76	
	ANSI RATING	Class 2500	Class 2500	
Pinion Shaft Extension	Diameter	Inches 4.495	mm 114	
	Length	Inches 9%	mm 251	
	Keyway (Width x Depth)	Inches 1 x 1/2	mm 25 x 13	
Gear Units Reduction Ratio: (Standard) (Optional)		2.02:1	2.02:1	
		3.28:1	3.28:1	
		4.07:1	4.07:1	
		5.23:1	5.23:1	
Rated Plunger Rod Load		Pounds 20000	N 88964	
Oil Capacity (Crank Case).		Gallons 22	Litre 83	
Gear Unit		Gallons 22	Litre 83	
Weight (On wooden shipping skid)(Est.)		Pounds 8800	Kg 3992	

PLUNGER DIA (INCH)	PLUNGER DIA (mm)	STUFFING BOX BORE (INCH)	STUFFING BOX BORE (mm)
2 5/8 - 2 3/4	67 - 70	3 5/8	92
2 7/8 - 3	73 - 76	3 7/8	98

PUMP PERFORMANCE DATA

ENGLISH UNIT

Plgr. Dia (inch)	Plunger Area (Sq. inch)	Displacement (Gal. Per Rev.)	Maximum Pressure (psi)	100 rpm		125 rpm		150 rpm		175 rpm		200 rpm		225 rpm	
				bpd	gpm	bpd	gpm	bpd	gpm	bpd	gpm	bpd	gpm	bpd	gpm
2½	5.4119	0.5623	3690	1929	56.26	2411	70.32	2893	84.38	3375	98.44	3857	112.50	4339	126.55
2½	5.9396	0.6171	3370	2117	61.75	2646	77.18	3175	92.60	3704	108.03	4233	123.46	4762	138.89
2½	6.4918	0.6745	3080	2313	67.46	2892	84.35	3470	101.21	4049	118.10	4627	134.95	5205	151.81
3	7.0686	0.7344	2830	2519	73.47	3149	91.85	3778	110.19	4408	128.57	5038	146.94	5668	165.32
Brake Horse Power Required				133		166		200		233		266		300	

METRIC UNIT

Plgr. Dia (mm)	Plunger Area (cm²)	Displacement (L / Rev.)	Maximum Pressure (kPa)	100 rpm		125 rpm		150 rpm		175 rpm		200 rpm		225 rpm	
				m³/d	L/s	m³/d	L/s	m³/d	L/s	m³/d	L/s	m³/d	L/s	m³/d	L/s
67	31.915	2.1284	25441	306	3.54	383	4.43	460	5.32	536	6.20	613	7.09	690	7.99
70	38.320	2.3360	23235	336	3.89	420	4.86	505	5.84	589	6.82	673	7.79	757	8.76
73	41.883	2.5532	21236	368	4.26	460	5.32	551	6.38	643	7.44	735	8.51	827	9.57
76	45.604	2.7800	19512	400	4.63	500	5.79	600	6.94	701	8.11	801	9.27	901	10.43
Kilo-watt Input				100		126		151		176		201		224	

ENGLISH AND METRIC

Gear Unit Pinion Shaft r / min at Gear Ratios of:	2.02:1	202	252	303	353	404	454
	3.28:1	328	410	492	574	656	738
	4.07:1	407	509	611	712	815	916
	5.23:1	523	654	785	915	1045	1177

PUMP MODEL

TRIPLEX PLUNGER PUMP RRP 48 TG



This eight-inch stroke pump is equipped with mono block Forged Steel fluid end, designed to handle various fluid.

Working Pressure

Upto 2,410 psig

Displacement

11375 bpd (331.77 gpm)

at 1410 psig

6652 bpd (194.02 gpm)

At 2410 psig

SPECIFICATIONS

		ENGLISH		METRIC		MAINTENANCE FEATURES
Pump size	(max .Plunger Dia x Stroke)	Inches	4¼ x 8	mm	108 x 203	<ul style="list-style-type: none"> • Horizontal design • Large power end access covers and doors • Outside access forbearing adjustment • Separate crosshead–plunger shank construction • Open frame cradles • Removable stuffing boxes
Standard Plunger Sizes		Inches	3-1/4, 3-1/2, 3-3/4, 4 and 4-1/4	mm	83, 89, 95, 102 and 108	
Rated bhp at 225 rpm		hp	300	Kw	224	
Hydrostatic Test Pressure:	Discharge	psi	3615	kPa	24924	
	Suction	psi	412.5	kPa	2844	
Maximum Working Pressure:	Discharge	psi	2410	kPa	16616	
	Suction	psi	275	kPa	1896	
Two Flanged Suction Connection:	Pipe Size	Inches	6"	mm	152	
	ANSI RATING	Class	150	Class	150	
Two Flanged Discharge Connection:	Pipe Size	Inches	4"	mm	102	
	ANSI RATING	Class	1500	Class	1500	
Pinion Shaft Extension	Diameter	Inches	4.495	mm	114	
	Length	Inches	9%	mm	251	
	Keyway (Width x Depth)	Inches	1 x ½	mm	25 x 13	
Gear Units Reduction Ratio: (Standard) (Optional)			2.02:1		2.02:1	
			3.28:1		3.28:1	
			4.07:1		4.07:1	
			5.23:1		5.23:1	
Rated Plunger Rod Load		Pounds	20000	N	88964	
Oil Capacity (Crank Case).		Gallons	22	Litre	83	
Gear Unit		Gallons	22	Litre	83	
Weight (On wooden shipping skid)(Est.)		Pounds	8300	Kg	3765	

PLUNGER DIA (INCH)	PLUNGER DIA (mm)	STUFFING BOX BORE (INCH)	STUFFING BOX BORE (mm)
3¼- 3½	83 - 89	4⅞	124
3¾ - 4¼	95 - 108	5¼	133

PUMP PERFORMANCE DATA

ENGLISH UNIT

Plgr. Dia (inch)	Plunger Area (Sq. inch)	Displacement (Gal. Per Rev.)	Maximum Pressure (psi)	100 rpm		125 rpm		150 rpm		175 rpm		200 rpm		225 rpm	
				bpd	gpm	bpd	gpm	bpd	gpm	bpd	gpm	bpd	gpm	bpd	gpm
3¼	8.2958	0.8619	2410	2956	86.22	3695	107.77	4434	129.33	5174	150.91	5913	172.46	6652	194.02
3½	9.6211	0.9996	2080	3429	100.01	4286	125.01	5143	150.00	6000	175.00	6857	200.00	7714	224.99
3¾	11.045	1.1475	1810	3936	114.80	4920	143.50	5904	172.20	6888	200.90	7872	229.60	8856	258.30
4	12.566	1.3056	1590	4478	130.61	5598	163.28	6717	195.91	7837	228.58	8956	261.22	10076	293.88
4¼	14.186	1.4739	1410	5055	147.44	6319	184.30	7583	221.17	8847	258.04	10111	294.90	11375	331.77
Brake Horse Power Required				133		166		200		233		266		300	

METRIC UNIT

Plgr. Dia (mm)	Plunger Area (cm ²)	Displacement (L / Rev.)	Maximum Pressure (kPa)	100 rpm		125 rpm		150 rpm		175 rpm		200 rpm		225 rpm	
				m ³ /d	L/s	m ³ /d	L/s	m ³ /d	L/s	m ³ /d	L/s	m ³ /d	L/s	m ³ /d	L/s
83	53.5210	3.2626	16616	470	5.44	587	6.79	705	8.16	822	9.51	940	10.88	1057	12.23
89	62.0717	3.7839	14341	545	6.31	681	7.88	817	9.46	954	11.04	1090	12.62	1226	14.19
95	71.2557	4.3437	12480	625	7.23	782	9.05	938	10.86	1095	12.67	1251	14.48	1407	16.28
102	81.0732	4.9422	10963	712	8.24	890	10.30	1068	12.36	1245	14.41	1423	16.47	1601	18.53
108	91.5240	5.5793	9722	803	9.29	1004	11.62	1205	13.95	1406	16.27	1607	18.60	1808	20.93
Kilo-watt Input				100		126		151		176		201		224	

ENGLISH AND METRIC

Gear Unit Pinion Shaft r / min at Gear Ratios of:		2.02:1	202	252	303	353	404	454
		3.28:1	328	410	492	574	656	738
	(Std)	4.07:1	407	509	611	712	815	916
		5.23:1	523	654	785	915	1045	1177

PUMP MODEL

TRIPLEX PLUNGER PUMP RRP 68 TGW



This eight-inch stroke pump is equipped with mono block Forged Steel fluid end, designed to handle various fluid.

Working Pressure

Upto 925 psig

Displacement

26607 bpd (775.71 gpm)

at 600 psig

17357 bpd (506.05 gpm)

At 925 psig

SPECIFICATIONS

		ENGLISH	METRIC	MAINTENANCE FEATURES
Pump size	(max .Plunger Dia x Stroke)	Inches 6½ x 8	mm 165 x 203	<ul style="list-style-type: none"> • Horizontal design • Large power end access covers and doors • Outside access forbearing adjustment • Separate crosshead–plunger shank construction • Open frame cradles • Removable stuffing boxes • These Pumps have wing type Guide Valve for crude oil application
Standard Plunger Sizes		Inches 5-1/4, 5-1/2, 5-3/4, 6, 6-1/4 and 6-1/2	mm 133, 140, 146, 152, 159 and 165	
Rated bhp at 225 rpm		hp 300	Kw 224	
Hydrostatic Test Pressure:	Discharge	psi 1387.5	kPa 9566	
	Suction	psi 412.5	kPa 2844	
Maximum Working Pressure:	Discharge	psi 925	kPa 6378	
	Suction	psi 275	kPa 1896	
Two Flanged Suction Connection:	Pipe Size	Inches 8"	mm 203	
	ANSI RATING	Class 150	Class 150	
Two Flanged Discharge Connection:	Pipe Size	Inches 6"	mm 152	
	ANSI RATING	Class 600	Class 600	
Pinion Shaft Extension	Diameter	Inches 4.495	mm 114	
	Length	Inches 9%	mm 251	
	Keyway (Width x Depth)	Inches 1 x ½	mm 25 x 13	
Gear Units Reduction Ratio: (Standard) (Optional)		2.02:1	2.02:1	
		3.28:1	3.28:1	
		4.07:1	4.07:1	
		5.23:1	5.23:1	
Rated Plunger Rod Load		Pounds 20000	N 88964	
Oil Capacity (Crank Case).		Gallons 22	Litre 83	
Gear Unit		Gallons 22	Litre 83	
Weight (On wooden shipping skid)(Est.)		Pounds 8725	Kg 3958	

PLUNGER DIA (INCH)	PLUNGER DIA (mm)	STUFFING BOX BORE (INCH)	STUFFING BOX BORE (mm)
5¼- 5¾	133 - 146	6¾	171
6 - 6½	152 - 165	7½	191

PUMP PERFORMANCE DATA

ENGLISH UNIT

Plgr. Dia (inch)	Plunger Area (Sq. inch)	Displacement (Gal. Per Rev.)	Maximum Pressure (psi)	100 rpm		125 rpm		150 rpm		175 rpm		200 rpm		225 rpm	
				bpd	gpm	bpd	gpm	bpd	gpm	bpd	gpm	bpd	gpm	bpd	gpm
5¼	21.648	2.2491	925	7714	224.91	9643	281.14	11572	337.36	13500	393.59	15429	449.82	17357	506.05
5½	23.758	2.4684	840	8467	246.84	10583	308.55	12700	370.26	14817	431.97	16933	493.68	19050	555.39
5¾	25.967	2.6979	770	9254	269.79	11567	337.24	13881	404.68	16194	472.13	18508	539.58	20821	607.03
6	28.274	2.9376	710	10076	293.76	12595	367.20	15114	440.64	17633	514.08	20152	587.52	22671	660.96
6¼	30.680	3.1875	650	10933	318.75	13666	398.44	16400	478.12	19133	557.81	21866	637.50	24600	717.19
6½	33.183	3.4476	600	11825	344.76	14782	430.95	17738	517.14	20694	603.33	23651	689.52	26607	775.71
Brake Horse Power Required				133		166		200		233		266		300	

METRIC UNIT

Plgr. Dia (mm)	Plunger Area (cm²)	Displacement (L / Rev.)	Maximum Pressure (kPa)	100 rpm		125 rpm		150 rpm		175 rpm		200 rpm		225 rpm	
				m³/d	L/s	m³/d	L/s	m³/d	L/s	m³/d	L/s	m³/d	L/s	m³/d	L/s
133	139.6612	8.5137	6378	1226	14.19	1532	17.74	1839	21.28	2145	24.83	2452	28.38	2758	31.93
140	153.2729	9.3439	5792	1346	15.57	1682	19.47	2018	23.36	2355	27.25	2691	31.15	3027	35.04
146	167.5302	10.2126	5309	1471	17.02	1838	21.28	2206	25.53	2574	29.79	2941	34.04	3309	38.30
152	182.4147	11.1200	4895	1601	18.53	2002	23.17	2402	27.80	2802	32.43	3203	37.07	3603	41.70
159	197.9326	12.0660	4482	1737	20.11	2172	25.14	2606	30.16	3041	35.19	3475	40.22	3909	45.25
165	214.0839	13.0506	4137	1879	21.75	2349	27.19	2819	32.63	3289	38.06	3759	43.50	4228	48.94
Kilo-watt Input				100		126		151		176		201		226	

ENGLISH AND METRIC

Gear Unit Pinion Shaft r / min at Gear Ratios of:		2.02:1	202	252	303	353	404	454
		3.28:1	328	410	492	574	656	738
	(Std)	4.07:1	407	509	611	712	814	916
		5.23:1	523	654	785	915	1046	1177



RUBBER REGENERATING & PROCESSING CO.

PHONE: +9133 22158100/7053/5186

MOBILE: +919903034679/9874184464

FAX: +9133-22157647

info@rrpcindia.com | www.rrpcindia.com

402 – Kamalalaya center, 156 A-Lenin Sarani,
Kolkata-700 013, India