

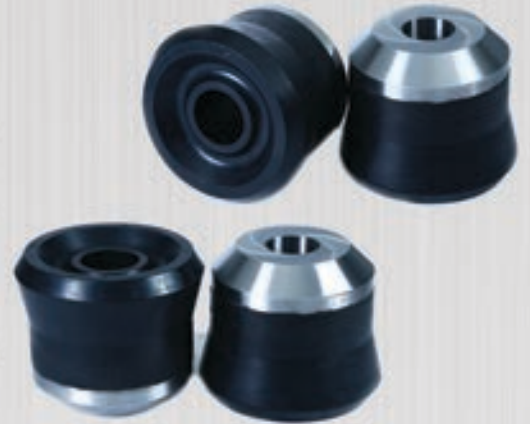
7. BOP "F" TYPE CUP TESTERS

RRP F-type cup tester assemblies are designed to be attached to the drill string and lowered into the casing beneath the wellhead to pressure test the blowout preventer stack and the wellhead.

Features and Benefits :

Sizes, Pressure Ratings, and Connections for Every Job -
The cup tester assemblies are rated to the API standard mill test pressure for the casing sizes up to 10,000 psi. Special reinforcing can be offered on all cup sizes and casing weight ranges to hold up to 15,000 psi.

RRP 'F' Type Cup Testers, Assemblies are available in sizes 5.1/2", 7", 9.5/8", 13.3/8". Cups are manufactured by using very tough specially designed synthetic rubber strongly bonded with metal cores to sustain very high testing pressure and to restrain its original shape and size after prolonged test pressure is released.



8. PULSATION DIAPHRAGM & STABILISER SLEEVES

RRP Pulsation dampener also called Elastomeric diaphragms (bladder) is designed as a single unit to give maximum service life in comparison to the conventional bladders, which have pre-vulcanized sections and provide low service life. The bladders while flexing, tend to fold rather than wrinkle, thereby reducing the points of stress concentration and practically eliminating elastomeric fatigue. Also the extrusion through the bottom flange connection is prevented by molding a steel insert into the middle of the diaphragm.

RRP dampeners are manufactured using a blend of hydrogenated nitrile rubber, which is suitable for water and most hydrocarbons with a continuous operating temperature range of -25° to 250°F.

Available for for models K-10-5000 and K-20-5000 of Hydril, dampeners.

Stabilizer sleeves for K10 and K20 style also available separately for the bladders.



9. MUD PUMP LINERS

PUMP	PUMP MODEL	LINER SIZES AVAILABLE	LINER TYPES
EMSCO TRIPLEX	F-350/500/650 F-800/1000 FB-1300/1600	4" 4.1/2" 5"	BI-METALLIC LINERS
GARDNER DENVER	PZ-7/8/9 PZ-10/11	5.1/2" 6"	CERAMIC LINERS
NATIONAL	8P-80/ 9P-100 10P-130	6.1/2" 7"	
OILWELL	A350 PT/ 560 PT/ 600 PT A850 PT/ 1100 PT A 1400 PT/ A 1700 PT		

